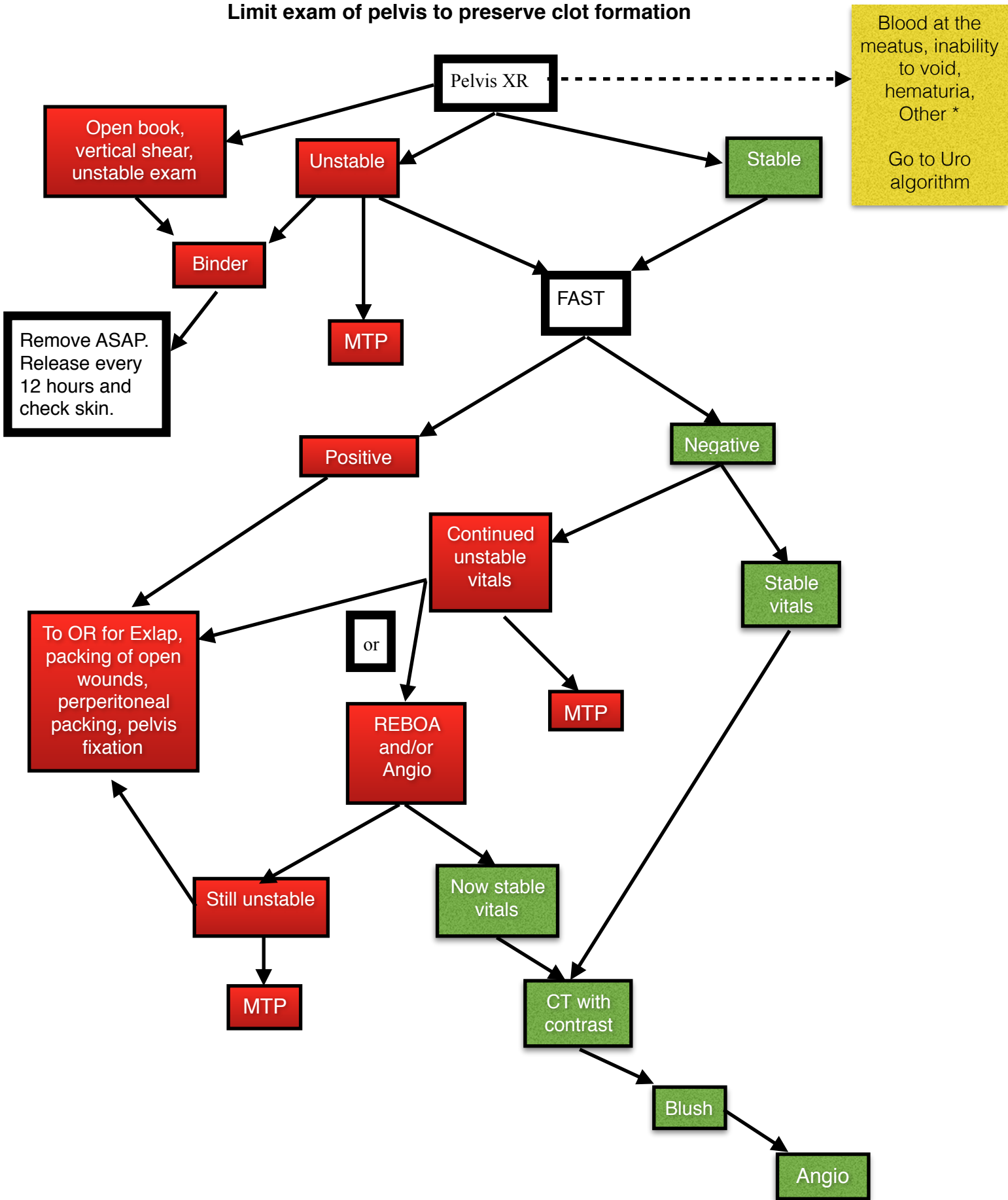
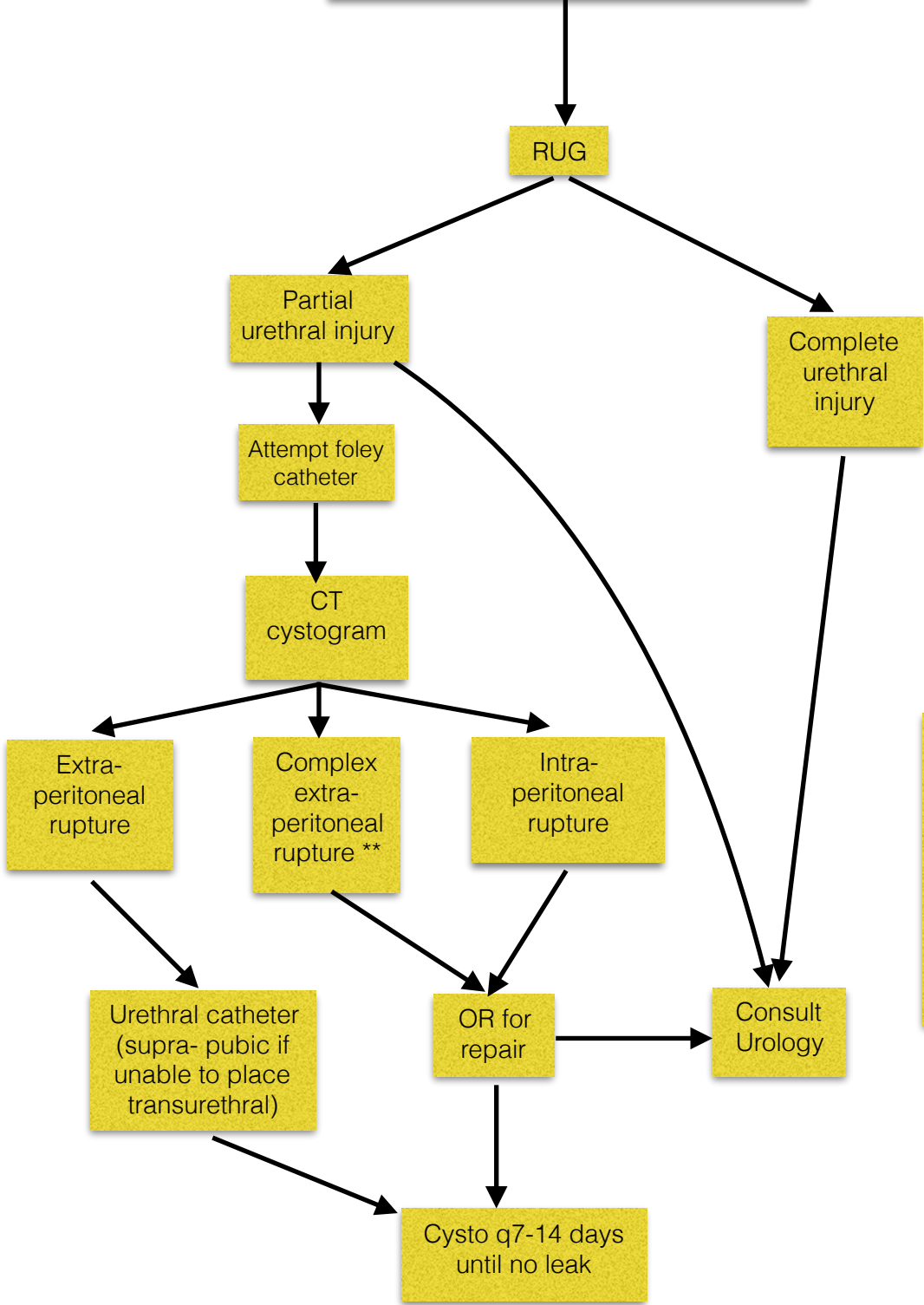


Complex Pelvic Fracture

Limit exam of pelvis to preserve clot formation



*Blood at the meatus, inability to void, hematuria, microscopic hematuria with pelvic fracture, pain on urination, perineal or penile hematoma, straddle injury, blood at the vaginal introits, vaginal laceration, labial swelling, urinary retention rectal examination with 'high-riding' prostate, difficulty or an inability to pass a urethral catheter



**Bladder neck involvement, bone fragments in the bladder wall, rectal injury, vaginal lacerations, entrapment of the bladder wall, open pelvic fractures, surgery for repair of abdominal or orthopedic injuries.